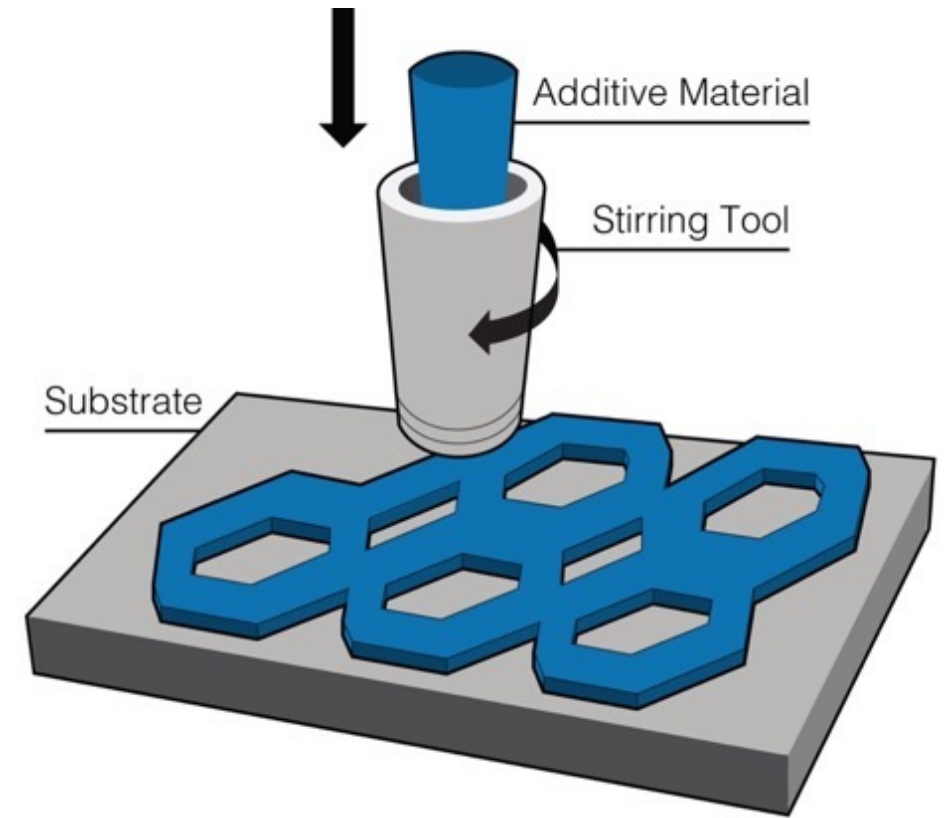
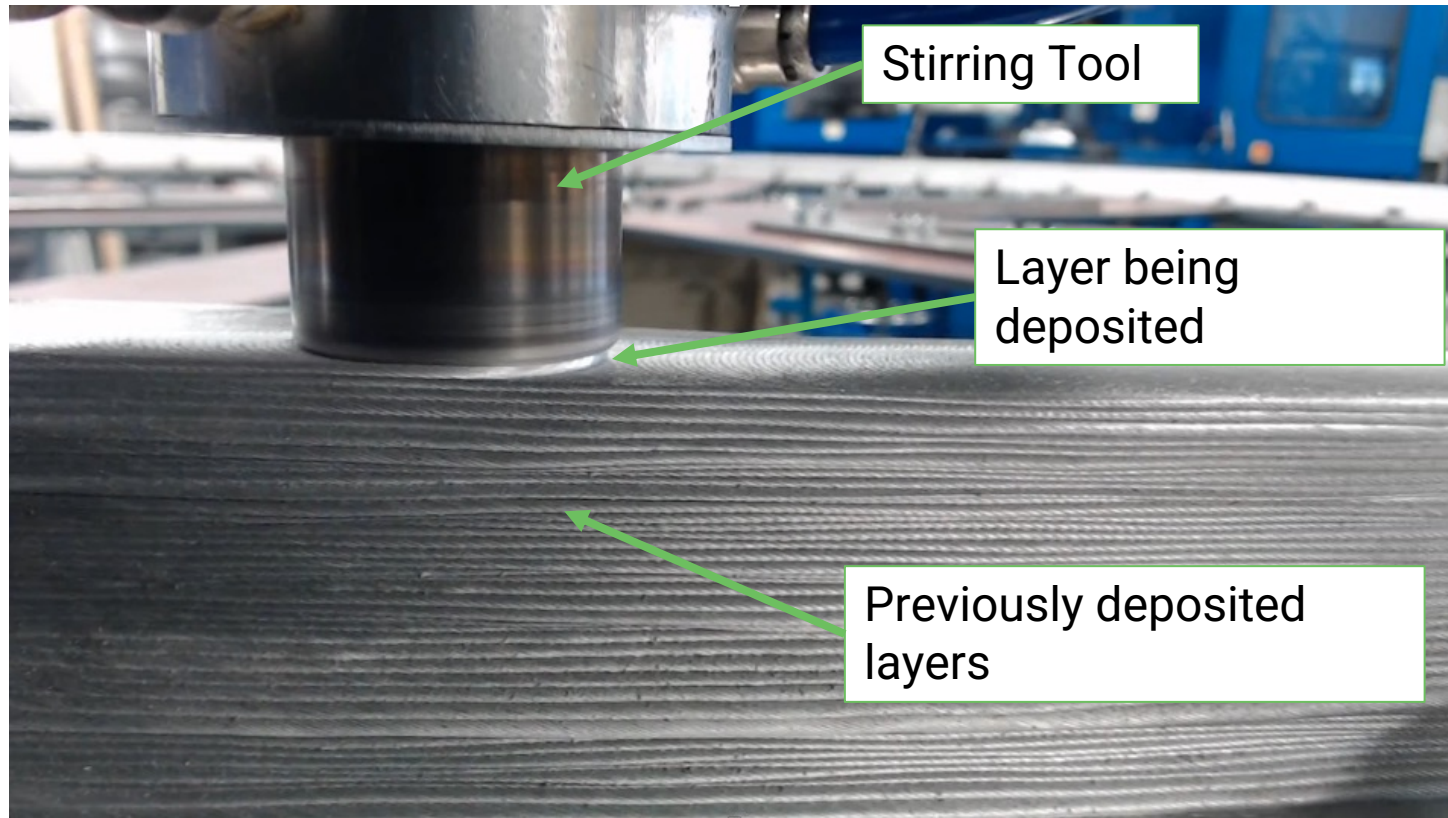
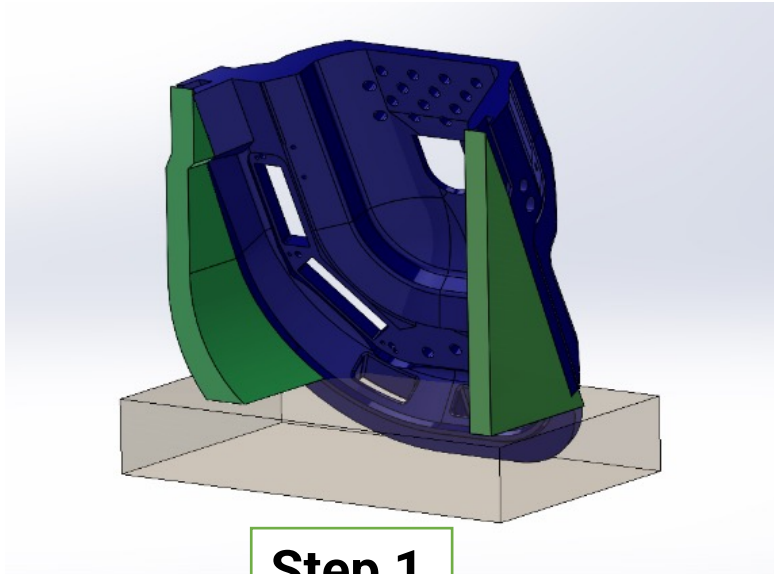


MELD Process and How it Works

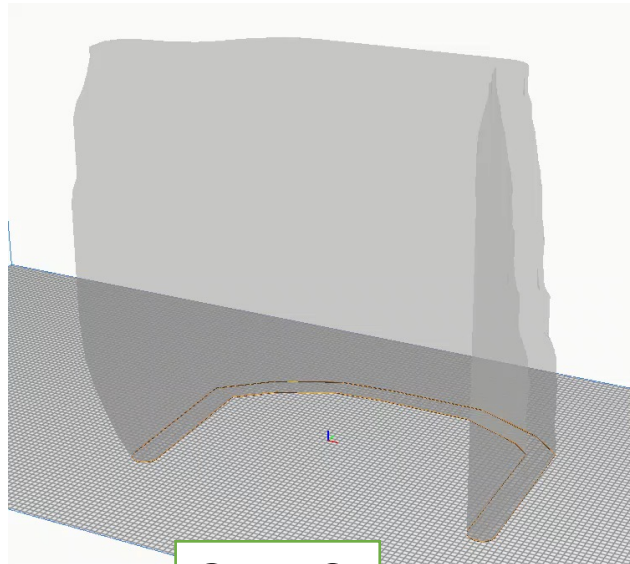
- MELD is a solid-state additive manufacturing method that can achieve fully dense parts with isotropic strength properties in a variety of materials and applications.



Commercial Deployment of MELD for long lead forging replacements: "When you can't afford to wait years for your part"



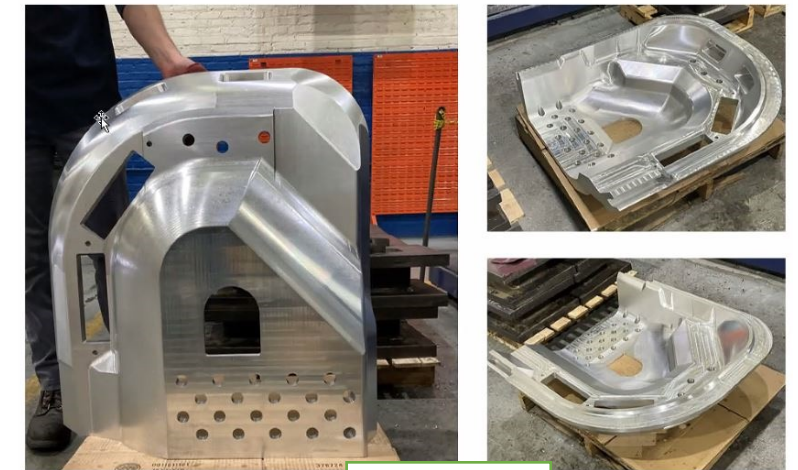
Step 1



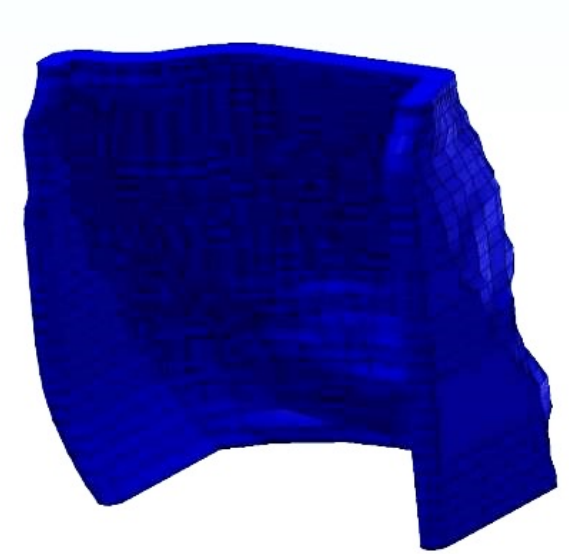
Step 3



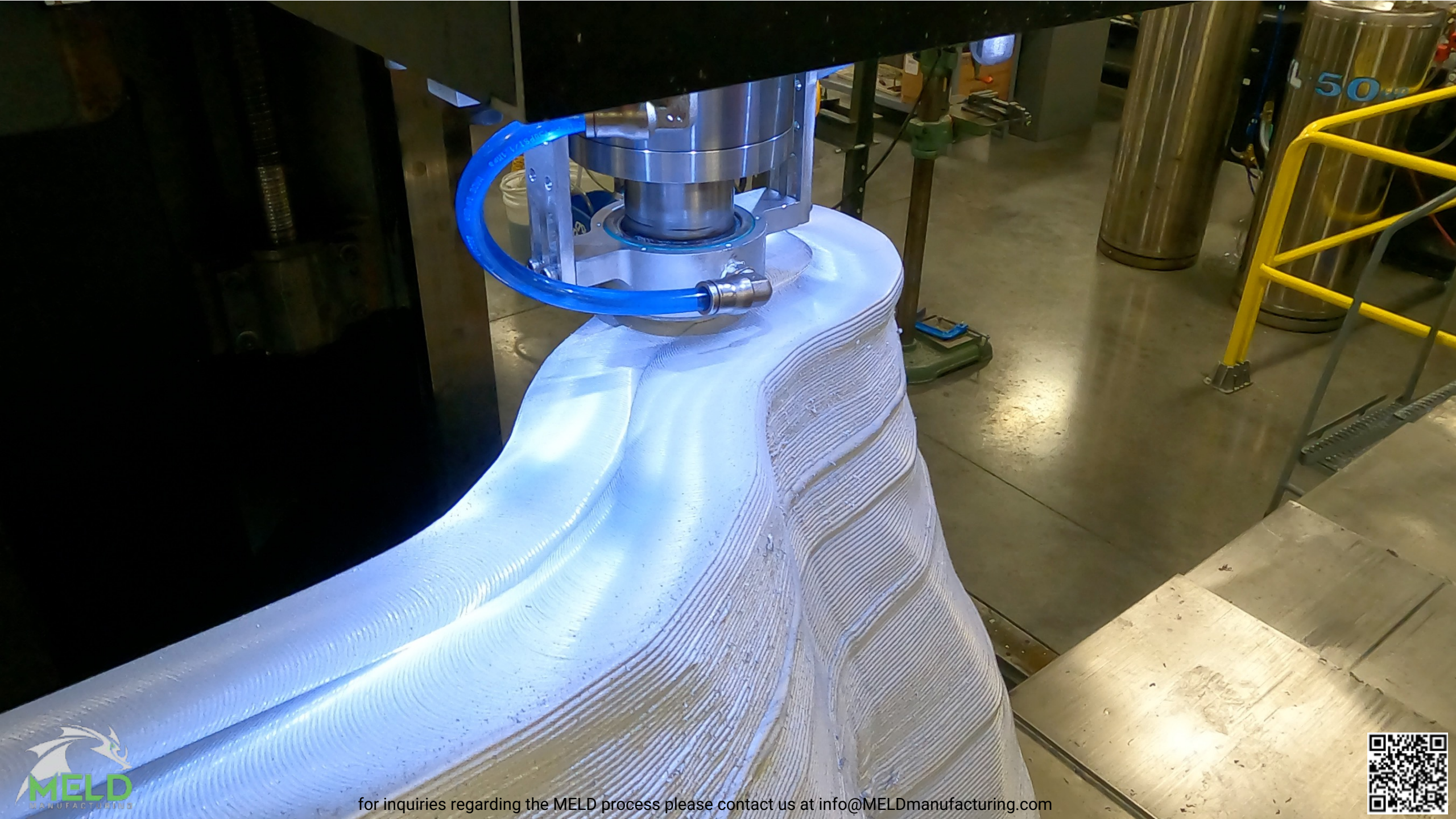
Step 4



Step 5



Step 2



for inquiries regarding the MELD process please contact us at info@MELDmanufacturing.com

