



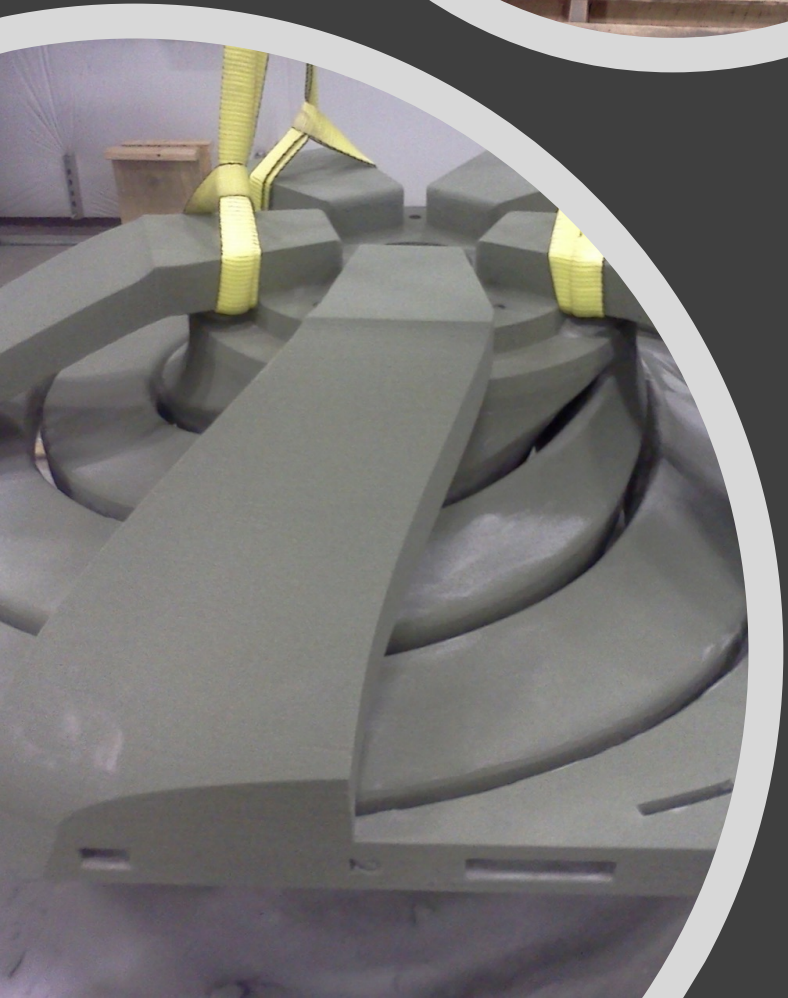
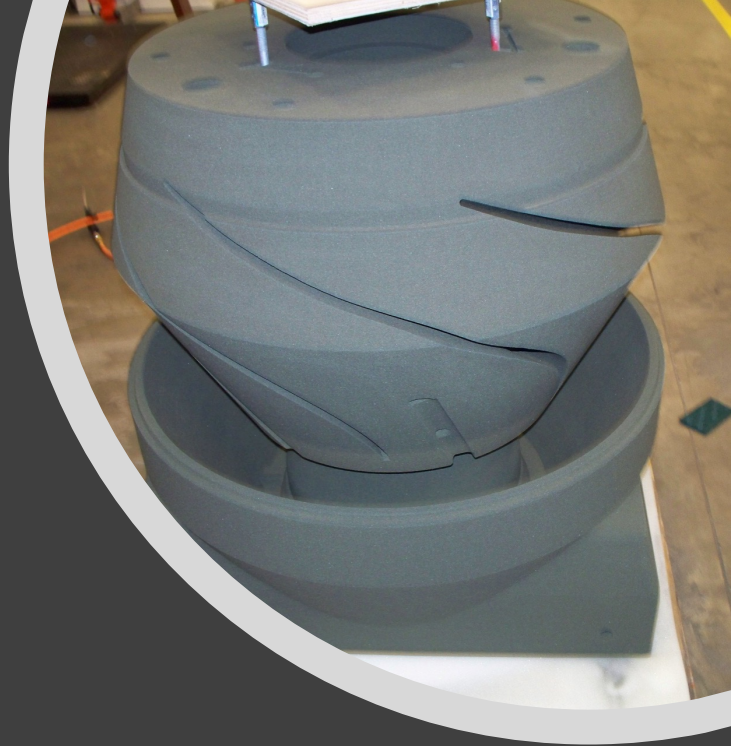
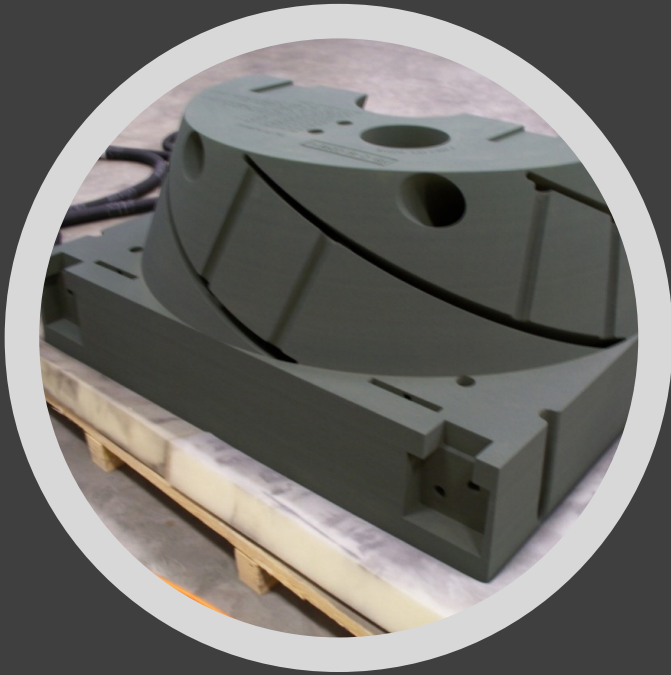
Large castings enabled by 3D Printed molds

Rick Lucas



SVP Future Markets

Rick.lucas@exone.com

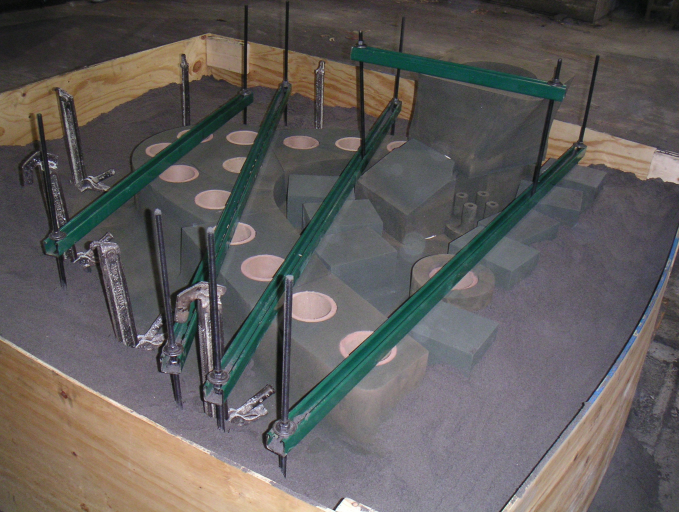


Large segment cores

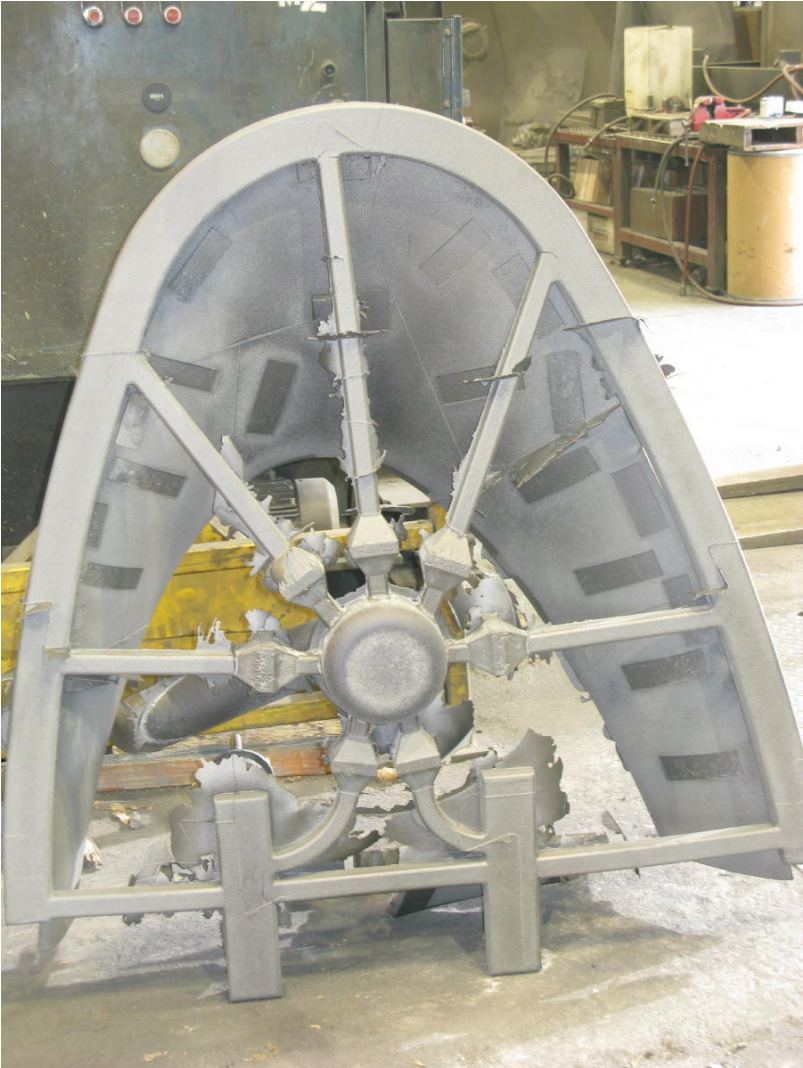


Waterjet tunnel inlet mold assembled and ready for pour

Pour weight : 2,000 lb



Casting with rigging attached



Casting attached on the hull.



Large segmented cores and mold during the assembly



Excellent Part Accuracy

02/15/2012 17:05

Casting dimensions: 136in x 18in x 40in

Invar 42 component during pouring
pour weight 12,000 lb

